

# Antares

3 mm cannulated compression screw  
Surgical Technique



Irish Distributer: O'Mara Medical

**E O S**  
www.omaramedical.com | Tel. +353-21-4322641

## Indications

The Antares screw is indicated for stabilization of forefoot osteotomies:

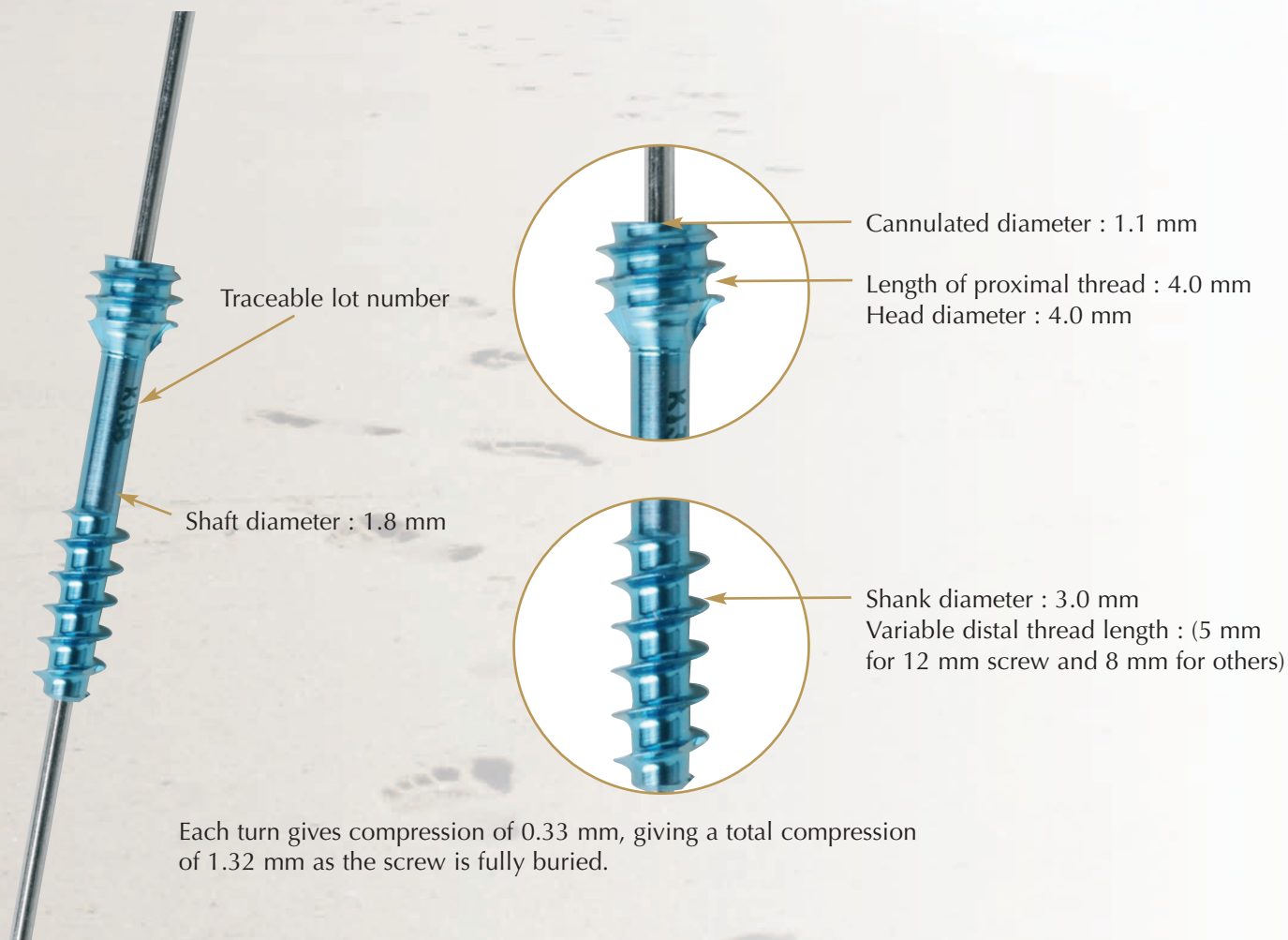
- 1st metatarsal osteotomies for hallux valgus (e.g. Scarf, Chevron),
- Phalangeal osteotomies of the great toe,
- Fixation of small bone fragments.

## Other indications

Hand surgery (fractures, osteotomies and arthrodesis).



## Characteristics



## Description

**Cannulated 3.0 mm titanium compression screw.**

- Completely countersunk screw.
- Large range of sizes : 12 to 34 mm (in 2 mm increments).
- 1.0 mm k-wire guided drilling and screwing.
- Self-tapping.
- 3 drills allow the head to be countersunk in different orientations : one for perpendicular placement, long and short drills for oblique placement.
- The screw head is completely countersunk to avoid soft tissues impingement.
- Titanium alloy (TA6V ELI standard ISO 5832-3).

# Antares

Irish Distributer: O'Mara Medical

[www.omaramedical.com](http://www.omaramedical.com) | Tel. +353-21-4322641

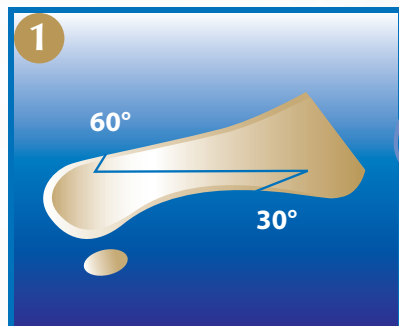


# Surgical Technique

## 1 - « Scarf » Metatarsal osteotomy :

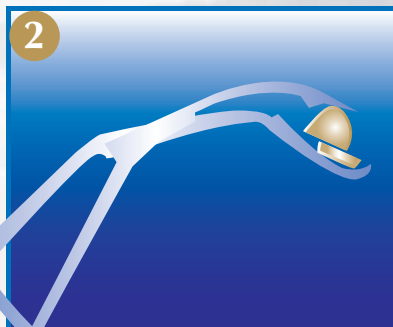
SCARF osteotomies allows several corrections :

- Medial and lateral translation,
- DMAA,
- Lowering of the metatarsal head,
- Shortening of the first metatarsal.

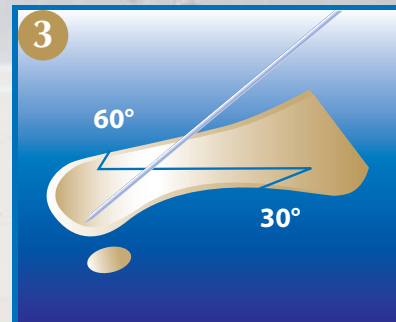


Dr Maestro

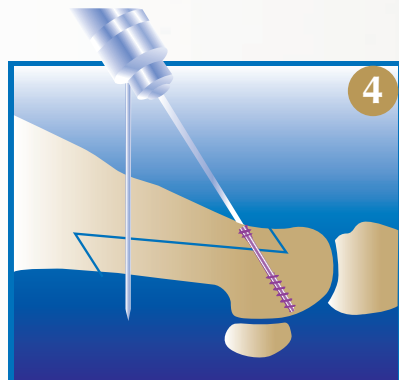
After the longitudinal cut and transverse cuts are performed, the appropriate correction is made by translation and/or by shortening and/or by rotation.



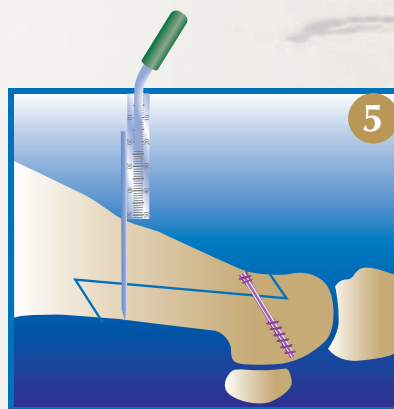
A Scarf clamp is used to maintain the corrected position.



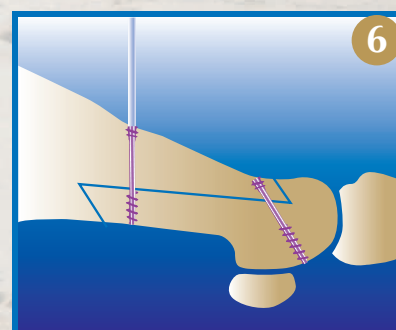
A 1.0 mm K-wire is introduced 1 cm from the distal transverse cut, and a proximal 1.0 mm K-wire is introduced obliquely.



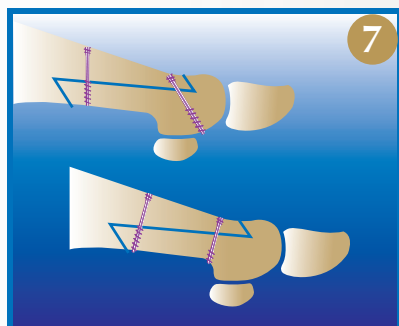
The first screw is distal and unicortical.



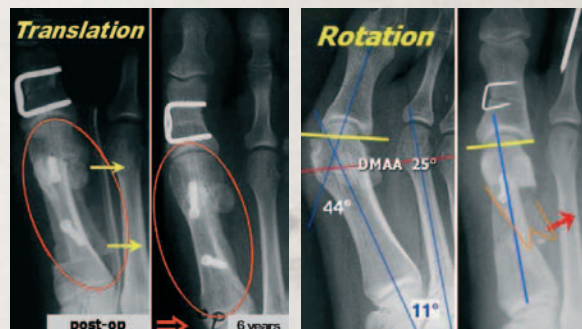
The length of the screw is measured (usually 18 or 20 mm).



The cannulated step drill is inserted over the 1.0 mm K-wire.



The distal end of the Antares screw is designed to minimize soft tissue damage.

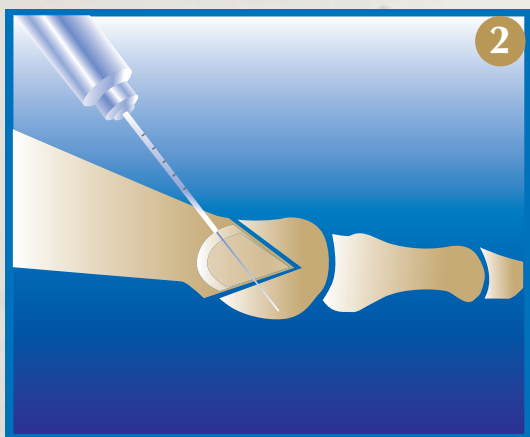
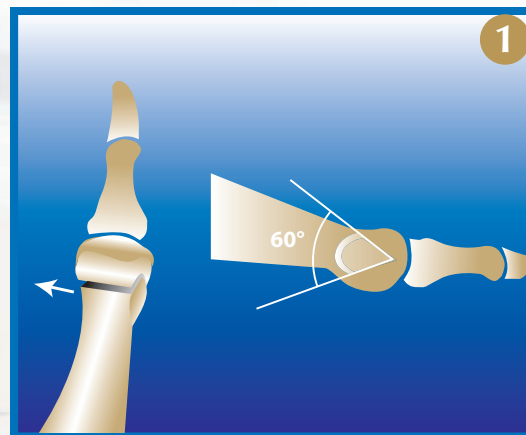


# Antares

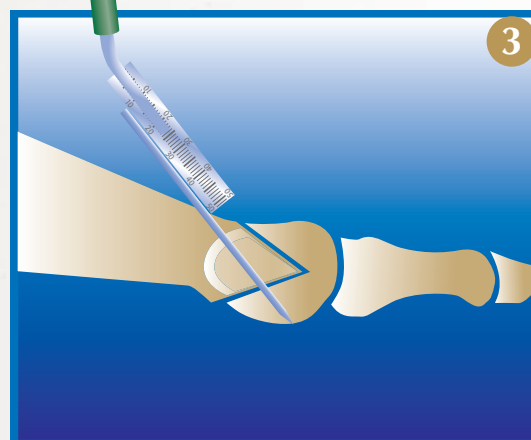
# Surgical Technique

## 2 - « Chevron » Metatarsal osteotomy :

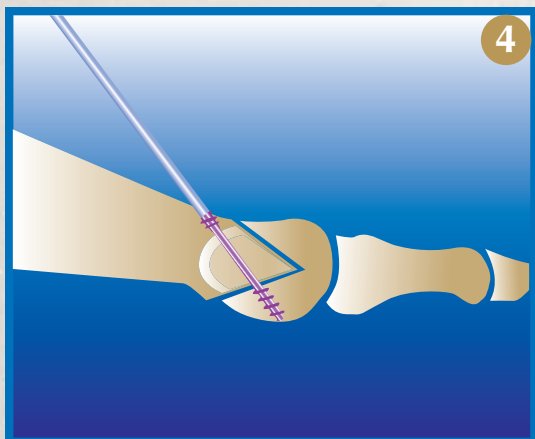
The Chevron osteotomy is a V-type distal osteotomy of the first metatarsal. The osteotomy respects the blood supply to the plantar aspect of the head and the neck. This osteotomy allows correction by translation and/or rotation.



At 5 mm from the dorsal transverse cut, a 1.0 mm K-wire is introduced obliquely into the plantar aspect of the metatarsal head. The screw is inserted proximally and is uni-cortical. The cannulated step drill is inserted over the 1.0 mm K-wire.



The length of the K-wire is measured.



And approximately 3 mm subtracted to give the length of the screw.



# Antares

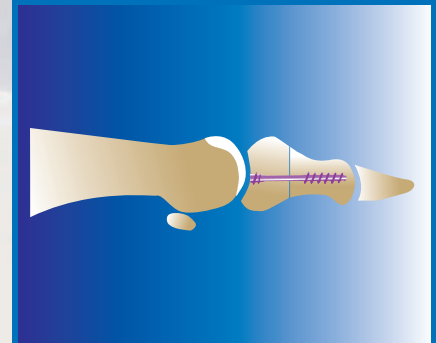
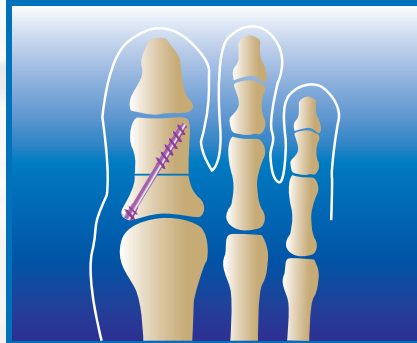
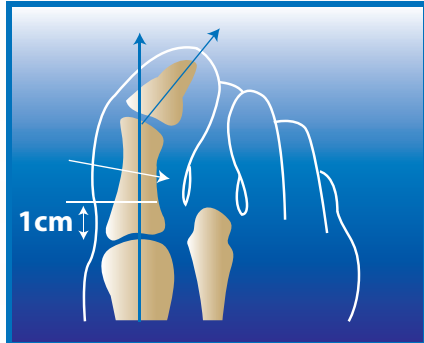
Irish Distributer: O'Mara Medical

www.omaramedical.com | Tel. +353-21-4322641

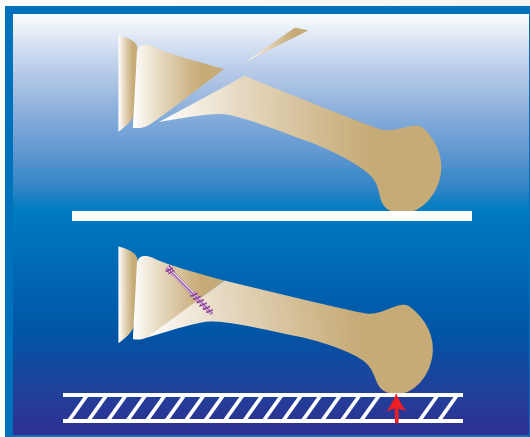
# Surgical Technique



## Other uses of the Antares screw



## Shortening and/or variation of Great toe proximal phalanx



## Basal Metatarsal osteotomy « BRT »



## Spina bifida multiple bony procedures and BRT 1st, 2d and 3d metatarsals



## HindFoot trauma:

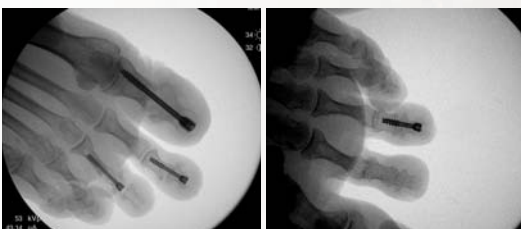
**Example :** Intra-articular fixation (16 y.o. adolescent - non union of previously fragmented Talus fracture - cortical-cancellous illiac crest bone graft fixed with 2 countersunk Antares screws).

## 1st MTP arthrodesis

with 2 Antares screws and 2 Pareos staples.



## PIP and PID arthrodesis of lesser toes



# Antares



# Instructions for use leaflet

NPO

03/08

## FOOT IMPLANTS / INTERNAL FIXATION IMPLANTS

### NON STERILE DISPOSABLE PRODUCTS

CE  
0120

June 1998 - Féb. 2000  
Mar. 02 - Jan. 05

According to decree no. 95-292 of 16 March 1995 (directive 93/42/CEE) relating to medical devices, this product must be handled and/or implanted by trained QUALIFIED PEOPLE who have READ AND UNDERSTOOD this INSTRUCTIONS FOR USE LEAFLET.

#### 1 - Description of the medical devices:

The implants, which are delivered, non-sterile are:

- Screws: scored compression screws of different diameters and several lengths. They are manufactured from titanium alloy.
- Staples: of different widths, sections and leg lengths. They are manufactured from stainless steel titanium or titanium alloy.
- Kirschner pins of different diameters and lengths. They are manufactured from stainless steel.

#### 2 - Indications:

##### Screws

- Mono and bi-cortical internal fixation
- Weil osteotomies
- Distal and proximal metatarsal osteotomies
- Internal fixation of the carpal scaphoid bone.
- SCARF/chevron osteotomies

##### Staples

- Phalangeal shortening osteotomies
- Metatarso-phalangeal arthrodeses
- Proximal or distal phalangeal osteotomies
- Arthrodeses of the middle and hind foot.
- Internal fixations requiring mono or bi-cortical compression.

##### Pins

- Temporary or definitive mini-fragment fixation.

#### 3 - Contra-indications:

- Acute or chronic local or systemic infections.
- Factors liable to compromise the success of implantation:
- Inappropriate physical activity.
- Infectious diseases.
- Obesity
- Systemic or metabolic disorders.
- Severe osteoporosis.
- Local bone tumours.
- Allergies to implant components.
- Smoking.

**It is important that the patient is informed of these factors and the influence which they may have on the success of implantation.**

#### - Undesirable effects: Allergy to metal.

- Risk of interference with medical imaging investigations: MRI/CT SCAN. The material used is non-magnetic.

#### 4 - Precaution before use:

This product is sold non sterile. New products must always be handled following Good Clinical Practice. These products cannot be implanted without prior cleaning and decontamination, before sterilisation. The material from which the products are made must be taken into account for this procedure. The product and its ancillary instrumentation must be autoclave sterilised. We recommend (water) steam sterilisation at 134°C for 18 minutes.

#### 5 - Precaution for use:

The surgeon must use the ancillary instrumentation provided observing the conditions stated in the operating procedure where applicable. When handling the implants avoid any contact with foreign material liable to harm their surface state.

Rectilinear PAREOS supports: it is formerly recommended that the supports not be bent.

**The EOS company SARL takes no responsibility in the event of changes in the initial characteristics of the device or when its products are associated with parts of different origin.**

#### 6 - Re-use:

Previously implanted products must never be reused. The EOS company takes no responsibility for reuse.

#### 7 - Re-sterilisation of products:

Only non-implanted products are permitted to be sterilised. Where applicable this is performed under the same conditions as described in paragraph 4.

#### 8 - Preventative procedures to avoid post-operative complications:

- Avoid forced extreme positions such as flexion/extension.
- Avoid violent sports.
- Avoid overweight.
- Wear orthopaedic footwear following the surgeon's prescriptions.
- Avoid carrying heavy loads.
- Ensure that a doctor treats any infection which develops either in the operated limb or in any other part of the body rapidly.

#### 9 - Ancillary instrumentation:

Please consult the ancillary instrumentation leaflet before implantation

#### INFORMATION:

Please contact our representative or distributor, or EOS sarl directly, for any further information about products or their use.

#### Manufactured by the EOS company sarl

ZI rue P Lebon • B.P. 26  
52800 Nogent • FRANCE  
Tél. 33 (0)3 25 31 82 53 • Fax 33 (0)3 02 31 76 66

#### Marketing department

ZA des Grands Prés  
26110 St Maurice sur Eygues • FRANCE  
Tél. 33 (0)4 75 28 26 70 • Fax 33 (0)4 75 28 70 61

#### Symbol legends:



Commercial catalogue reference



Do not reuse – Disposable



Batch code



Warning, see instructions for use leaflet

## ASSOCIATED INSTRUMENTS

REFERENCE	DESCRIPTION
AP02.002	Cannulated screwdriver
AP02.003	Ruler
AP02.017	Scarf clamp
AP03.103	Depth gauge
AP02.005	Cannulated oblique one step drill Ø 2.1 Lg. 22 mm
AP02.015	Cannulated oblique one step drill Ø 2.1 mm Lg. 13 mm
AP02.010	Cannulated drill Ø 2.1 mm / Ø 3.3 mm Lg. 22 mm
K01.010.070	K-wire Ø 1 mm Lg. 70 mm
K01.010.100	K-wire Ø 1 mm Lg. 100 mm





# Antares

## IMPLANTS

REFERENCE	DESCRIPTION
P06.030.012	Antares Compression screw Ø 3 Length 12 mm
P06.030.014	Antares Compression screw Ø 3 Length 14 mm
P06.030.016	Antares Compression screw Ø 3 Length 16 mm
P06.030.018	Antares Compression screw Ø 3 Length 18 mm
P06.030.020	Antares Compression screw Ø 3 Length 20 mm
P06.030.022	Antares Compression screw Ø 3 Length 22 mm
P06.030.024	Antares Compression screw Ø 3 Length 24 mm
P06.030.026	Antares Compression screw Ø 3 Length 26 mm
P06.030.028	Antares Compression screw Ø 3 Length 28 mm
P06.030.030	Antares Compression screw Ø 3 Length 30 mm
P06.030.032	Antares Compression screw Ø 3 Length 32 mm
P06.030.034	Antares Compression screw Ø 3 Length 34 mm



• See instructions for use 

• Single use 

• No sterile **NO STERILE**



**CE**  
**0120**

The products are manufactured and referenced within the frame of the standards in force. Implantation procedures are described in the surgical technique.

Non contractual document. The manufacturer reserves the right, without prior notice, to modify the products in order to improve their quality.

WARNING : Federal law (USA) restricts this device to sale by or on the order of a physician.



**ZA Grands Prés • Route de Nyons**  
**F-26110 ST MAURICE SUR EYGUES • France**  
**Tél : + 33 (0)4 75 28 26 71 • Fax : + 33 (0)4 75 28 70 61**  
**www.eos-france.com • info@eos-france.com**

Irish Distributer: O'Mara Medical

www.omaramedical.com | Tel. +353-21-4322641

*Distributed by :*